

Product Sheet

Cynomolgus_BDCA2 Jurkat Cell Line

Catalog number: GM-C20051

Version 3.3.1.241204

Description	Cynomolgus_BDCA2 Jurkat Cell Line is a clonal stable Jurkat cell line that constitutively expresses the cynomolgus BDCA2 and cynomolgus FCER1G genes, constructed using lentiviral technology.
Quantity	5E6 Cells per vial, 1 mL
Product Format	1 vial of frozen cells
Shipping	Shipped on dry ice
Storage Conditions	Liquid nitrogen immediately upon receipt
Target	Cynomolgus_BDCA2 & Cynomolgus_FCER1G
Gene ID/Uniprot ID	A0A2K5UWP4 & Q8SPW1-1
Host Cell	Jurkat
Recovery Medium	RPMI 1640+10% FBS+1% P.S
Growth medium	RPMI 1640+10% FBS+1% P.S+0.75 µg/mL Puromycin+400 µg/mL G418
Note	None
Freezing Medium	90% FBS+10% DMSO
Growth properties	Suspension
Growth Conditions	37°C, 5% CO ₂
Mycoplasma Testing	The cell line has been screened to confirm the absence of Mycoplasma species.
Safety considerations	Biosafety Level 2
Note	It is recommended to expand the cell culture and store a minimum of 10 vials at an early passage for potential future use.

Materials

Reagent	Manufacturer/Catalogue No.
RPMI 1640	VivaCell/C3010-0500
Fetal Bovine Serum	Cegrogen biotech/A0500-3010
Pen/Strep	Thermo/15140-122
G418	Genomeditech/GM-040402
Puromycin	Genomeditech/GM-040401
Anti-H_BDCA2 hIgG1 Antibody	In house/

Figures

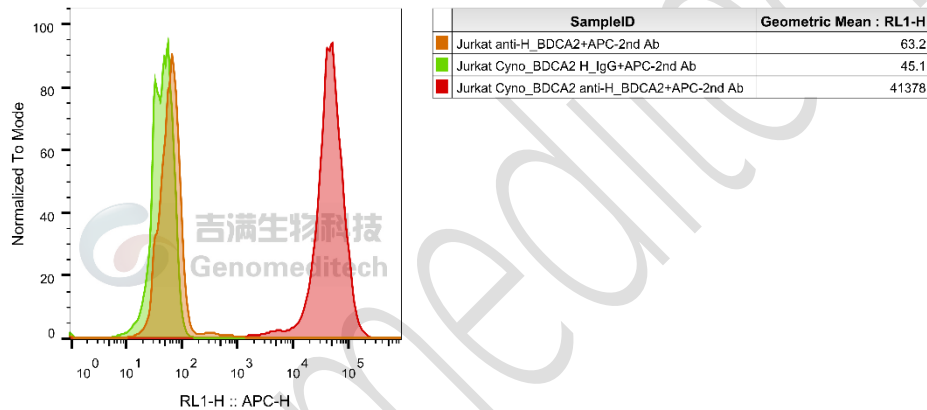


Figure 1 | Cynomolgus_BDCA2 Jurkat Cell Line was determined by flow cytometry using Anti-H_BDCA2 hIgG1 Antibody(litifilimab) (Genomeditech/GM-31294AB).

Cell Recovery

Recovery Medium: RPMI 1640+10% FBS+1% P.S

To insure the highest level of viability, thaw the vial and initiate the culture as soon as possible upon receipt. If upon arrival, continued storage of the frozen culture is necessary, it should be stored in liquid nitrogen vapor phase and not at -70°C. Storage at -70°C will result in loss of viability.

- Thaw the vial by gentle agitation in a 37°C water bath. To reduce the possibility of contamination, keep the O-ring and cap out of the water. Thawing should be rapid (approximately 2 - 3 minutes).
- Remove the vial from the water bath as soon as the contents are thawed, and decontaminate by dipping in or spraying with 70% ethanol. All of the operations from this point on should be carried out under strict aseptic conditions.
- Transfer the vial contents to a centrifuge tube containing 5.0 mL complete culture medium. And spin at approximately 176 x g for 5 minutes. Discard supernatant.

- d) Resuspend cell pellet with the recommended complete medium. And dispense the suspension into 1 - 2 T-25 culture flasks.
- e) Incubate the culture at 37°C in a suitable incubator. A 5% CO₂ in air atmosphere is recommended if using the medium described on this product sheet.

Cell Freezing

Freezing Medium: 90% FBS+10% DMSO

- a) Centrifuge at 176 x g for 3 minutes to collect cells.
- b) Resuspend the cells in pre-cooled freezing medium and adjust the cell density to 5E6 cells/mL.
- c) Aliquot 1 mL into each vial.
- d) Place the vial in a controlled-rate freezing container and store at -80°C for at least 1 day, then transfer to liquid nitrogen as soon as possible.

Cell passage

Growth medium: RPMI 1640+10% FBS+1% P.S+0.75 µg/mL Puromycin+400 µg/mL G418

Approximately 48-72 hours after the initial thawing, the cells can be passaged for the first time. After this initial passage, the culture medium can be adjusted to growth medium supplemented with antibiotics. If cells are not passaged within 48 hours, it is recommended to add some fresh recovery medium and place the flask horizontally.

- a) When the cell density reaches 1.5 - 2E6 cells/mL, subculture the cells. Do not allow the cell density to exceed 2E6 cells/mL.
- b) It is recommended to use T-25 flasks for subculturing.
- c) These cells are suspension cells, and it is recommended to use the "half-medium change" method to maintain optimal cell conditions during passaging.
- d) During passaging, you can directly add fresh growth medium to the culture flask, gently pipette to resuspend the cells, and then transfer the cell suspension to a new T-25 flask for continued culture.

Subcultivation Ratio: Maintain cultures at a cell concentration between 3E5 and 1E6 viable cells/mL.

Medium Renewal: Every 2 to 3 days

Notes

- a) These cells are sensitive to density, so please ensure that the cell density is maintained within an appropriate range during culture and subculturing.
- b) During the first passage, pay attention to the nutrient supply; if not subculturing, make sure to add fresh recovery medium every other day as needed.

Sequence

CLEC4C(BDCA2) [A0A2K5UWP4](#)

MVPEEPPQDREKGVWWFQLKVWSVAVVSILLLCVCFVSSVASHNFMYSKTVKRLSKLQEQYYPSLTCV
 MEGKDMEDWSCCPTPWTFSQSSCYFISTVMQSWTKSQNNCSVMGADLVVINTKEEQDFITQNLKINSAYFLG
 LSDPKGWRHWQWVDQTPYNKNVTFWHSGEPNPDERCAIINFRSEEWGWNDVHCHVPQKSICKMKKIYI

FCER1G Q8SPW1

MIPAVVLLLLLLVEQAAALGEPQLCYILDAILFLYGIVLTLTYCRLKIQRKAAIASYEKSDGVYTGLSTRNQE
 TYETLKHEKPPQ*

Related Products

CD40: CD40L	
H_CD40(TNFRSF5) Reporter 293 Cell Line	H_CD40(TNFRSF5) Reporter Jurkat Cell Line
Cynomolgus_CD40 CHO-K1 Cell Line	Cynomolgus_CD40L CHO-K1 Cell Line
H_CD40(TNFRSF5) CHO-K1 Cell Line	H_CD40(TNFRSF5) HEK-293 Cell Line
H_CD40L CHO-K1 Cell Line	H_CD40L HEK-293 Cell Line
Anti-H_CD40 hIgG1 Antibody(APX005M)	Anti-H_CD40 hIgG1 Antibody(ravagalimab)
Anti-H_CD40L hIgG1 Antibody(dapirolizumab)	Anti-H_CD40L hIgG1 Antibody(frexalimab)
Biotinylated Human CD40 Protein; His-Avi Tag	Cynomolgus CD40 Protein; His Tag
Human CD40 Protein; His Tag	Human CD40L Protein; His Tag
IFN- α	
IFNα Reporter HEK-293 Cell Line	IFNα Reporter MDCK Cell Line
IFNα Reporter THP1 Cell Line	
BCMA:BAFFR:TACI	
H_BAFFR Reporter Cell Line	H_BCMA Reporter Cell Line
H_TACI Reporter Cell Line	Cynomolgus_BCMA CHO-K1 Cell Line
H_BCMA CHO-K1 Cell Line	H_BCMA HEK-293 Cell Line
Anti-BAFF hIgG1 Antibody(belimumab)	Anti-BAFFR hIgG1 Antibody(ianalumab)
Anti-BCMA hIgG1 Antibody(Belantamab)	Anti-BCMA hIgG1 Antibody(SEA-BCMA)
Anti-BCMA hIgG4 Antibody(BCMB69)	
Biotinylated Human BAFF Protein; His-Avi Tag	Cynomolgus BAFF Protein; His Tag
Human BAFF Protein; His Tag	Mouse BAFF Protein; His Tag
BDCA2(CLEC4C)	
H_BDCA2 Reporter Jurkat Cell Line	Cynomolgus_BDCA2 CHO-K1 Cell Line
H_BDCA2 CHO-K1 Cell Line	H_BDCA2 HEK-293 Cell Line
H_BDCA2 Jurkat Cell Line	
Anti-H_BDCA2 hIgG1 Antibody(Litifilimab)	
Cynomolgus BDCA2 Protein; His Tag	Human BDCA2 Protein; His Tag

Limited Use License Agreement

Genomeditech (Shanghai) Co., Ltd grants to the Licensee all intellectual property rights, exclusive, non-transferable, and non-sublicensable rights of the Licensed Materials; Genomeditech (Shanghai) Co., Ltd will retain ownership of the Licensed Materials, cell line history packages, progeny, and the Licensed Materials including modified materials.

Between Genomeditech (Shanghai) Co., Ltd, and Licensee, Licensee is not permitted to modify cell lines in any way. The Licensee shall not share, distribute, sell, sublicense, or otherwise provide the Licensed Materials, or progenitors to third parties such as laboratories, departments, research institutions, hospitals, universities, or biotechnology companies for use other than for the purpose of outsourcing the Licensee's research.

Please refer to the Genomeditech Cell Line License Agreement for details.

Genomeditech